



**GOLD LOCK™**

# Gold Lock Desktop™

## User Manual

Follow these simple steps to install, configure, and use Gold Lock Desktop™.





**GOLD LOCK™**

## Content

<b>1</b>	<b>Installation.....</b>	<b>02</b>
<b>2</b>	<b>Configuration.....</b>	<b>03-06</b>
<b>3</b>	<b>Use.....</b>	<b>07</b>
<b>4</b>	<b>Verification &amp; Security.....</b>	<b>08</b>
<b>5</b>	<b>Backup &amp; Restore.....</b>	<b>09</b>
<b>6</b>	<b>File Encryption.....</b>	<b>10</b>





**GOLD LOCK™**

## 1 Installation

**Gold Lock Desktop™** is a free program. You can download the .zip file from <http://www.gold-lock.com>. Then unzip all the files to a folder called Gold Lock Desktop. Open that folder, and click on setup.exe to install the program.

In order to install the program, you must be running Windows XP or Vista. You must also have the .NET Framework installed. If you do not have .NET installed, the **Gold Lock Desktop™** installer will install .NET automatically.

During setup, the program may prompt you to allow installation to continue. Click "Allow." You may also be asked whether you want to install **Gold Lock Desktop™** for "All Users" or "Just Me." Select "Just Me."

**Gold Lock Desktop™** will now start automatically when you start your computer. If you need to start the program manually for any reason, click the Start button, then All Programs, and locate **Gold Lock Desktop™** in your list of programs. When **Gold Lock Desktop™** is running, an icon will appear on your Taskbar.





## 2 Configuration

If you are using Microsoft Outlook, follow these steps. If you are using a different email client, the steps you take will be different, but the process is essentially the same.

- a. Click on the Tools menu, and then select "Account Settings."
- b. Choose the email account you will use to send and receive encrypted emails. The account must be a POP3/SMTP type account.

To verify that this email account is configured and working properly, click the Test Account Settings button in the dialog box that appears. You will also see two fields labeled "Incoming mail server" and "Outgoing mail server (SMTP)." The values in these fields may or may not be the same.

**Change E-mail Account**

**Internet E-mail Settings**  
Each of these settings are required to get your e-mail account working.

**User Information**  
Your Name: David F  
E-mail Address: test@gold-lock.com

**Server Information**  
Account Type: POP3  
**Incoming mail server:** mail.gold-lock.com  
**Outgoing mail server (SMTP):** mail.gold-lock.com

**Logon Information**  
User Name: test@gold-lock.com  
Password: [REDACTED]  
 Remember password  
 Require logon using Secure Password Authentication (SPA)

**Test Account Settings**  
After filling out the information on this screen, we recommend you test your account by clicking the button below. (Requires network connection)

Test Account Settings ...

More Settings ...

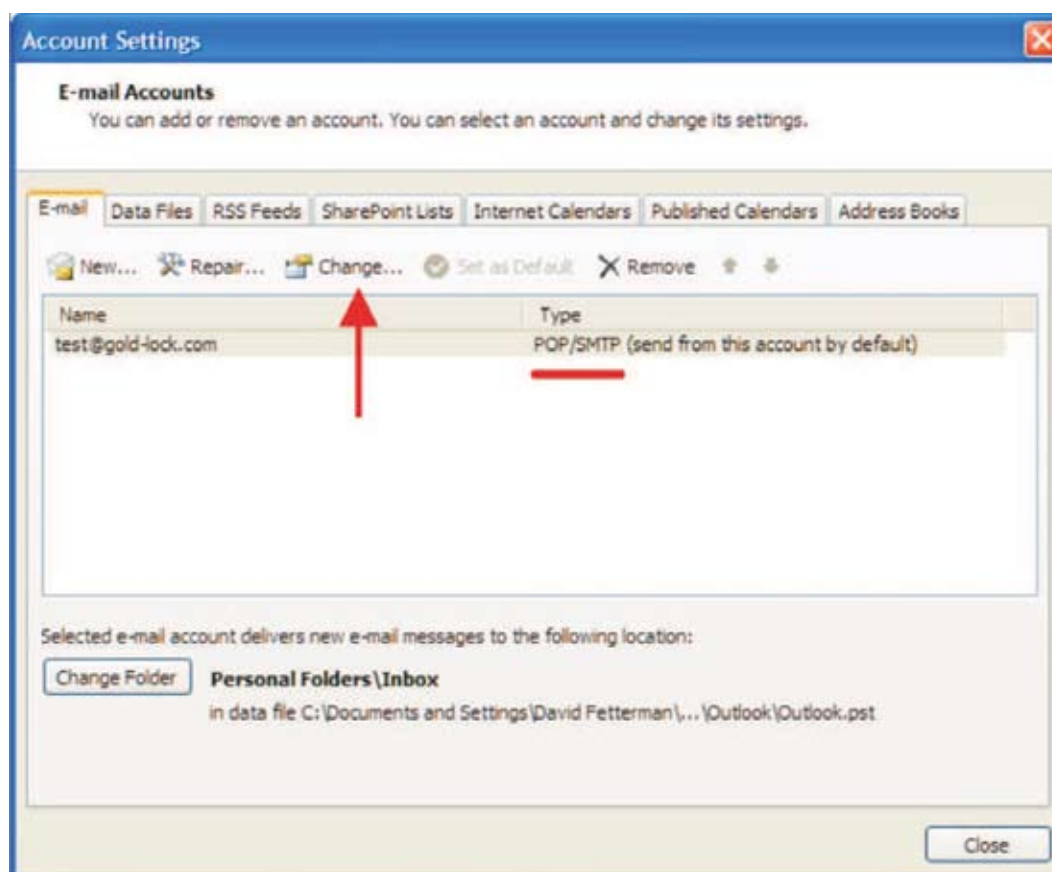
< Back Next > Cancel



**GOLD LOCK™**

## 2 Configuration

c. Then click "Change."



- d. Now right-click the **Gold Lock Desktop™** icon on your Taskbar. Choose "Settings."
- e. When the Settings window opens, choose the E-Mail Accounts tab.
- f. In the box labeled POP3 host, enter the name of your incoming mail server from your email client. In the box labeled SMTP host, enter the name of your outgoing mail server.

\* If you are using Gmail as your POP3 provider, the following servers should to be used:

POP3 - [SSL://pop.gmail.com](https://pop.gmail.com)

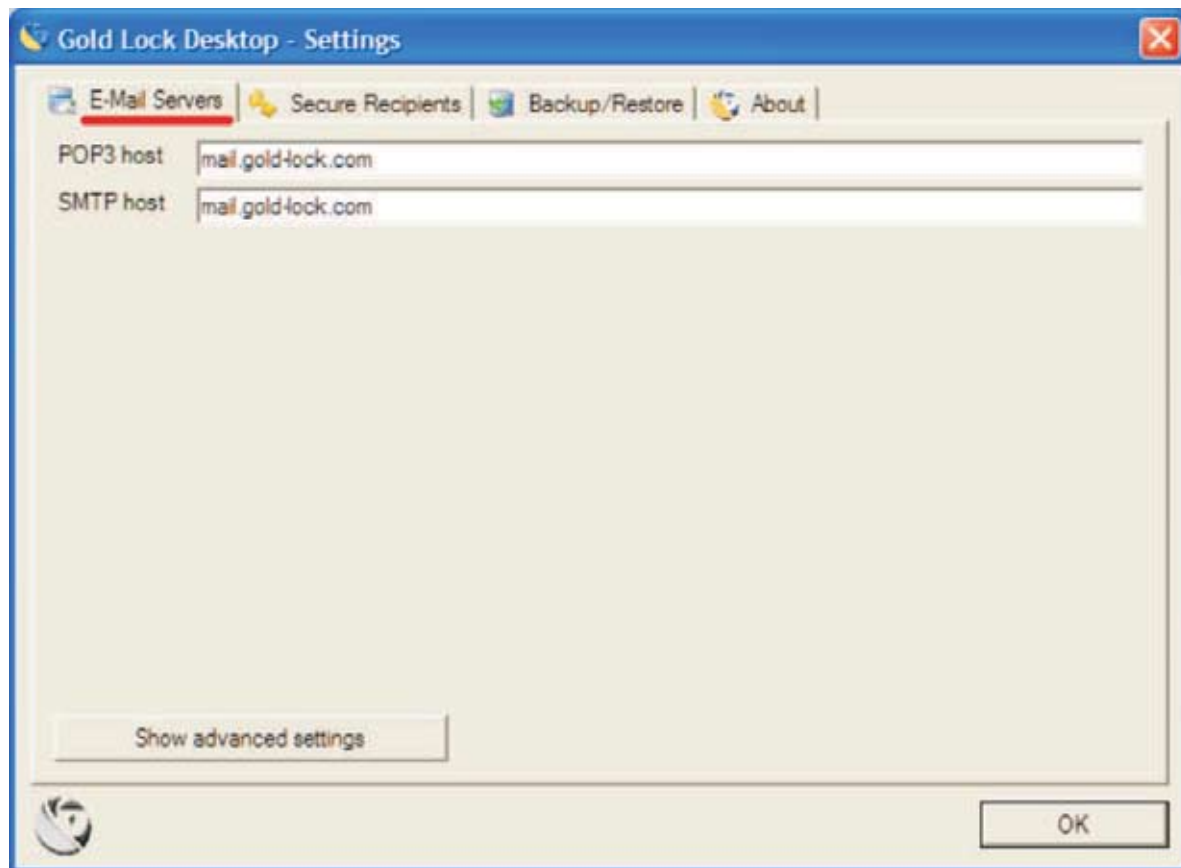
SMTP - [SSL://smtp.gmail.com](https://smtp.gmail.com)





**GOLD LOCK™**

## 2 Configuration



- g.* Click OK to close the **Gold Lock Desktop™** Settings window.
- h.* Type 127.0.0.1 into your email client in place of both your incoming and outgoing mail servers.





**GOLD LOCK™**

## 2 Configuration

**Change E-mail Account**

**Internet E-mail Settings**  
Each of these settings are required to get your e-mail account working.

**User Information**  
Your Name: David F  
E-mail Address: test@gold-lock.com

**Server Information**  
Account Type: POP3  
Incoming mail server: 127.0.0.1  
Outgoing mail server (SMTP): 127.0.0.1

**Logon Information**  
User Name: test@gold-lock.com  
Password: \*\*\*\*\*  
 Remember password  
 Require logon using Secure Password Authentication (SPA)

**Test Account Settings**  
After filling out the information on this screen, we recommend you test your account by clicking the button below. (Requires network connection)  
Test Account Settings ...

More Settings ...

< Back   Next >   Cancel

- i. Click "Next," then click "Finish." **Gold Lock Desktop™** is now configured.





**GOLD LOCK™**

### 3 Use

To send encrypted emails using **Gold Lock Desktop™**, both you and the recipient must be using **Gold Lock Desktop™**, and you must have the public key of the recipient.

When you open an email from another person containing a public key, the sender's email address will be automatically entered in your Secure Recipients list. You will thereafter be able to send that person encrypted messages. When you send an email to anyone in your Secure Recipients list, **Gold Lock Desktop™** will automatically encrypt your email message. There is no way for an attacker to read your encrypted email. If the recipient is not in your Secure Recipients list, the email will be sent normally, without encryption.

In order for another person to send you encrypted messages, you must first send them your public key. To send someone your public key, simply send him or her an email message with GOLDLOCK in the subject line. You will be prompted to verify that you want to send your public key. If you do not see the verification prompt on your screen, look at your taskbar. The prompt will be one of the active program buttons; click it to open the prompt.

Sending encrypted emails  
is as easy as  
**1-2-3** with  
**Gold Lock Desktop™!**





**GOLD LOCK™**

## 4 Verification & Security

### Verification

You can verify that an email sent to you has been encrypted by going to a webmail program such as [www.mail2web.com](http://www.mail2web.com). Log into your email account and try to open an encrypted email. You will be unable to do so. You would be unable to do so even with the assistance of modern supercomputers. The RSA-2048 security algorithm used by **Gold Lock Desktop™** is completely secure against attackers.

No one has ever been able to “crack” RSA-2048 encryption.

### Preventing Man In The Middle Attack

To make sure that your key set is valid and secure, it is considered good practice to verbally verify it with your secure contacts once in a while. The best way to do so is to initiate a phone call, and read out the “Public Key Hash” next to each secure contact, and ask them to make sure the same number appear for them as “My Public Key Hash”.

The public key hash is not the actual public key, but only a highly shortened representation of it, the hash cannot be used for decryption.





**GOLD LOCK™**

## 5 Backup & Restore

### Backup & Restore

To backup your encryption keys and the public keys of your secure contacts, or to copy them to additional computers, go to the Backup/Restore tab on the Settings window of **Gold Lock Desktop™**. Click the Browse button, and select the default path and file, or change the path and/or filename. Do not change the file extension (.xml). If you change the path and/or filename, make sure you enter the same path and filename in the Restore box. To back up your configuration and secure recipients list, click the Back up Your Settings button. To restore previously backed up settings, click the Restore Your Settings button. It is a good idea to do this periodically.

If you upgrade to a newer version of **Gold Lock Desktop™**, you must uninstall the old version first. Back up your settings before uninstalling. Then, after you have installed the new version, make sure the proper path



**GOLD LOCK™**

## 6 File Encryption

### File Encryption

You can also use **Gold Lock Desktop™** to encrypt files securely on your computer.

- ▶ Insert a USB flash drive into your computer.
- ▶ Create an empty folder on the flash drive with the name GOLDLOCK.
- ▶ Then right-click on a file you would like to encrypt, and choose Encrypt/Decrypt File.

The first time you do this, **Gold Lock Desktop™** will create a key in the GOLDLOCK folder on your flash drive. Now you can encrypt or decrypt any file on your computer, as long as you have plugged in the flash drive with the key. If the flash drive is not plugged in, you will be unable to open an encrypted file. The U.S. Government has approved the AES-256 file encryption algorithm used by **Gold Lock Desktop™** for encryption of Top Secret materials.

If you want to encrypt certain files using a different key, simply use a different flash drive and repeat the above process. **Gold Lock Desktop™** will create a new key on the new drive. You will only be able to open files encrypted with any particular key using the drive containing that key, however.

We highly recommend that you create a backup of the key, either by copying the GOLDLOCK folder on your USB flash drive to another flash drive, or by copying the key file inside the GOLDLOCK folder to a secure location.





**GOLD LOCK™**

**AU**

**T:** +61 2 9327 8808 **F:** +61 2 9328 3200  
9 Mona Road Darling Point Sydney  
New South Wales, 2072 Australia

**HK**

**T:** +852 2529 2391 **F:** +852 2529 2320  
L25 Heng Shan Centre 145 Queens Road East  
Wanchai, Hong Kong

**UK**

**T:** +44 (0) 870 366 5254  
2 Sheraton Street, London, W1F 8BH,  
London, United Kingdom



[WWW.GOLDLOCKGROUP.COM](http://WWW.GOLDLOCKGROUP.COM)

